

**FEDERAL DEMOCRATIC REPUBLIC OF
ETHIOPIA
MINISTRY OF AGRICULTURE & NATURAL
RESOURCES
Plant Health Regulatory Directorate
Migratory Pest Survey and Control Case Team**



DESERT LOCUST BULLETIN JULY 2016

ISSUE NO. 126

Tel: 011 6461147
Fax: 011-6 - 4 6 11 47
e-mail: zebdewosalato@yahoo.com,
solomonmirete7@gmail.com

Introduction

Locust information officers from Plant Health Regulatory Directorate conducted Survey on 2,595ha of land in Eastern Ethiopian, Afar and Ethiopian Somali region in 14 districts at the beginning of the month, and reported the presence of solitary Desert locust adults in Ethiopian Somali region Aysha district N1047/E4232 (density 3-5/ha) and Afar region Teru district N1222/E4019 (density 200-300/ha) in surveyed areas. Most parts of the country including Ethiopian Somali region, where summer breeding takes place have been received low-moderate amount of rainfall during the month. As a result, the annual vegetation's are green and the soil is wet, the habitat is remained favorable so, generally in July Desert Locust situation becomes serious in Eastern part of Ethiopia and additional survey team travelled to the areas for more monitoring and follow up.

Ecological conditions

Vegetation status – Generally the annual vegetation are green in which desert locust summer breeding is used to take place.

Temperature – Due to the main rainy season temperature decrease slightly and cloudy weather conditions prevail in most part of the country including desert locust summer breeding areas.

Rainfall – Most parts of the country have been received low to high amount of rainfall during the whole month, In Ethiopian Somali region where Desert locust summer breeding takes place have been received low-moderate amount of rain whole month.

Desert Locust Situation-

The locust situation becomes serious during July in summer breeding areas.

Forecasting

The good weather condition, particularly green vegetation, wet soil moisture and warm temperature, suitable for solitary desert locust to form a group. So desert locust status in Ethiopia might be serious in August. Close monitoring and survey work is highly required as ecological conditions remained favorable for locusts in summer breeding areas.

OVERVIEW OF SURVEY AND CONTROL CAPACITY IN ETHIOPIA

Two 4WD pickup vehicles are available for regular locust operation.

Sprayers available in central store (Addis Ababa):

- Mist blower AU 8000 - 36
- Spinning disk - 170
- Vehicle mounted sprayers - 8
- E-Pesticide loading pumps - 12

Pesticides available in central store (Addis Ababa)

- ULV - 1000 lit.
- EC - 14,000 lit.

Pesticides available in central store (Dire Dawa and Somali Admin.Regions)

- ULV - 120 lit.

Survey and Communication equipments available in locust unit (Addis Ababa):-

- e Locust 2 - 6 – 2 of them are in the Regions.
- eLocust 3 - 5
- Tachometer - 24
- GPS - 26
- Compass - 6
- Anemometer - 6
- Stop watch - 6

Staff composition

In the Plant Health Regulatory Directorate of the Ministry of Agriculture and Natural Resources, the migratory survey and control case team is composed of:-

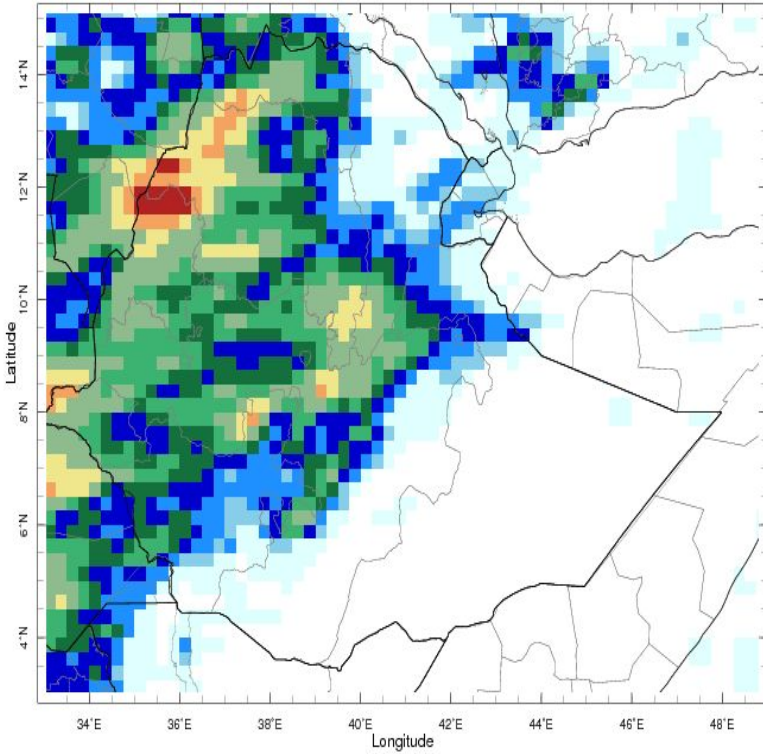
- 3 entomologists (two of them are locust officers) and 1 pesticide and sprayers use
- At Regional Administrative level
- Plant Health Clinics (16 PHCs) -15 crop protection experts among these 6 are Locust Focal Persons and 5 more technicians
- 26 Scouts (at locust prone districts)

DISTRIBUTION LIST

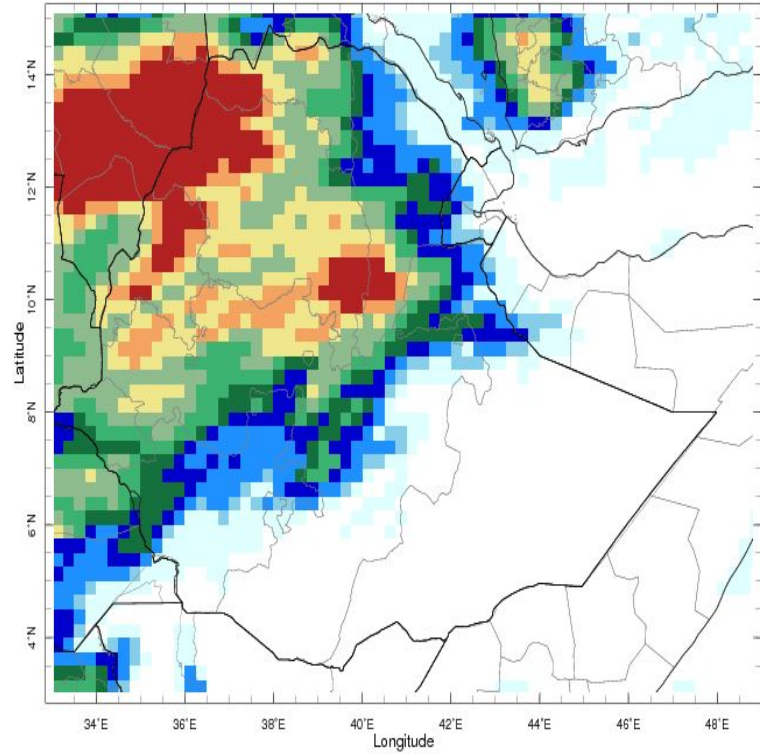
This bulletin is distributed to the following:-

- DLIS -Rome
- CRC-EMPRES/CR
- Ministry of Agriculture, Ethiopia
- Regional Bureaus of Agriculture
- WFP - Ethiopia
- Neighboring countries (Sudan, Eritrea, Yemen, Egypt, Oman, Djibouti, Somalia, Saudi Arabia etc)
- FAO - Ethiopia
- UNDP - Ethiopia
- USAID - Ethiopia
- USAID/OFDA – USA
- DLCO-EA

Rainfall Estimates for 1st and 2nd decades of July 2016 in Ethiopia



1-10 Jul 2016



11-20 Jul 2016

